



**Aviator**<sup>®</sup>  
Xpro<sup>™</sup>

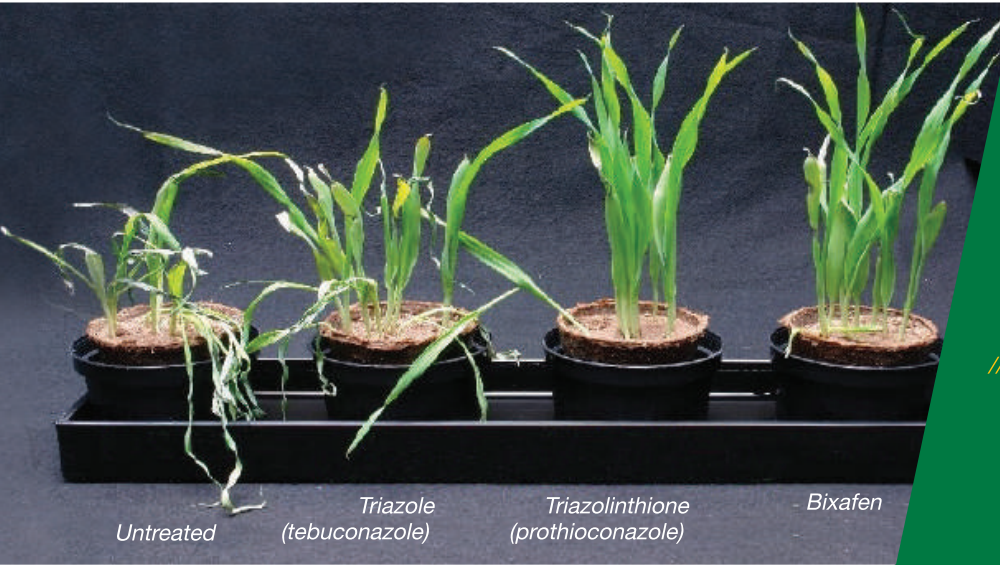
*The best*  
just got better

### **What is Aviator<sup>®</sup> Xpro<sup>™</sup>**

// Aviator<sup>®</sup> Xpro<sup>™</sup> is the combination of the two actives **Bixafen** (SDHI) and **Prothioconazole** resulting in long lasting disease control with the benefit of yield improvement due to its unique distribution through the cereal leaf tissue as a result of the Xpro<sup>™</sup> technology.



## Drought stress tolerance in barley

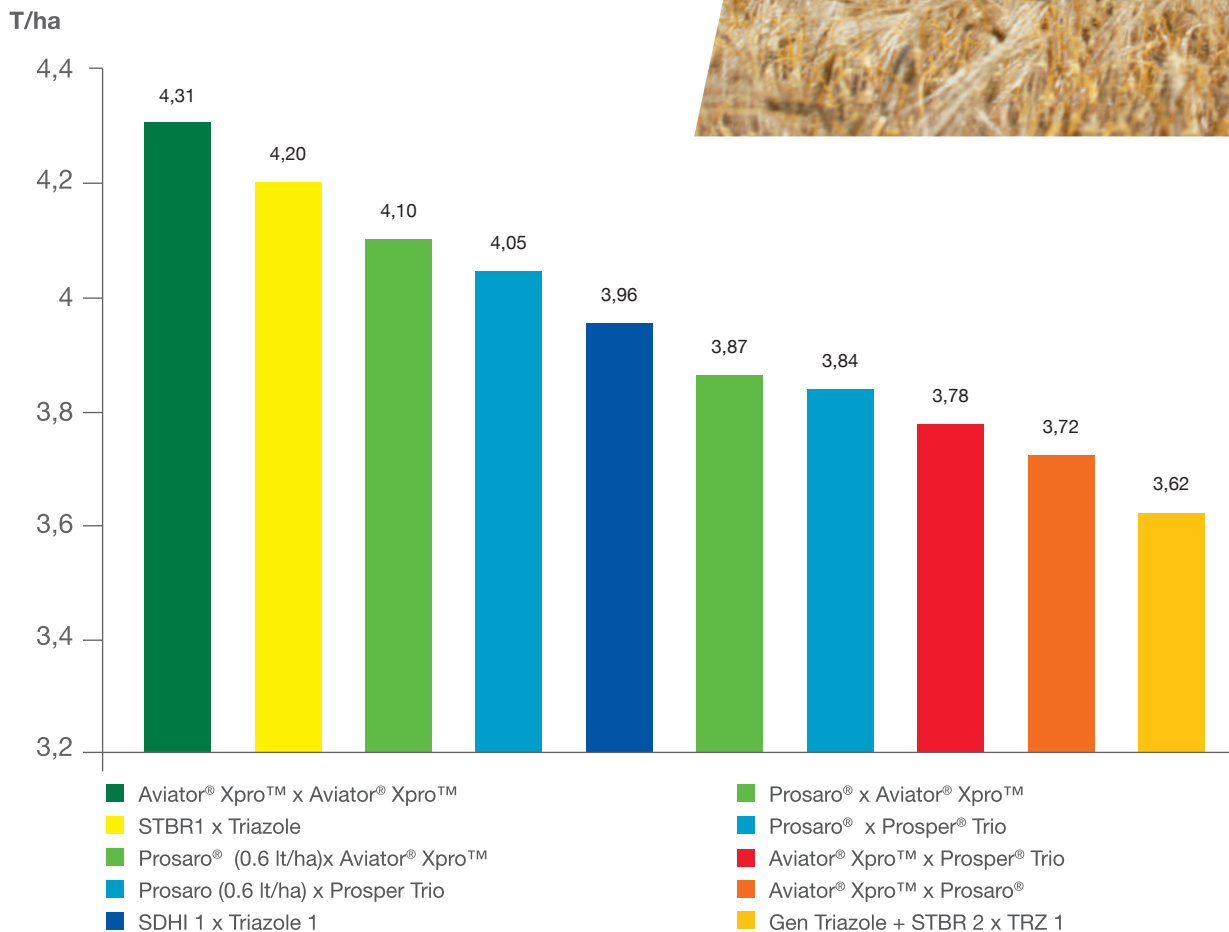


## Aviator® Xpro™ with yield-boosting effect

- // Combination of two strong complementing fungicide partners with different modes of action
- // Excellent control of key cereal diseases boosting yield through high disease control and positive impact on plant physiology
- // Specifically designed for an efficient anti-resistance strategy



## New generation bringing proven boost to yield in wheat



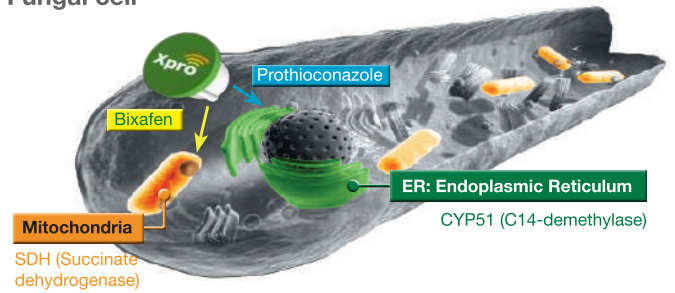
STBR - Strobilurin; SDHI - Succinate Dehydrogenase Inhibitor; TRZ - Triazole; x - followed by



## Dual mode of action of Xpro™ technology

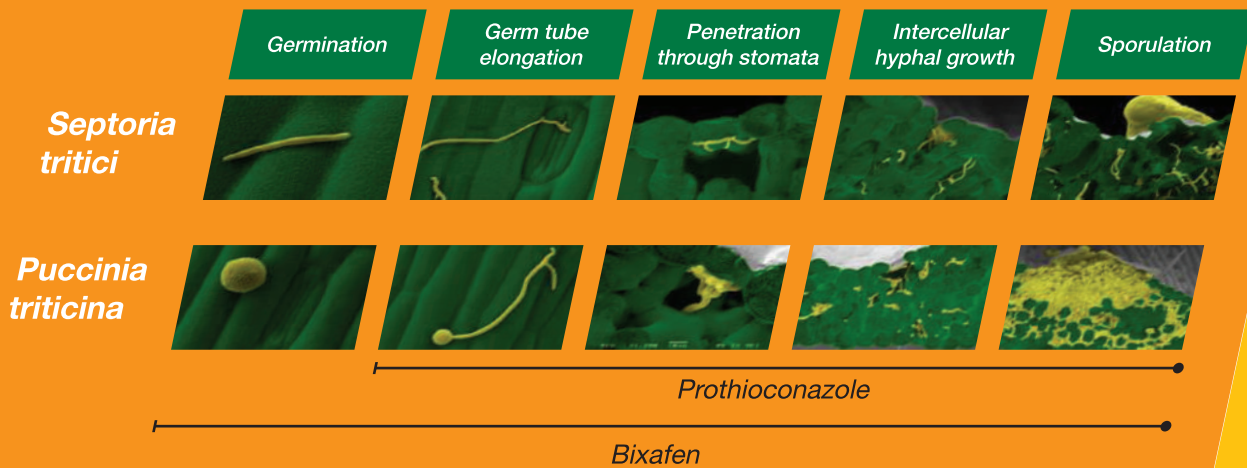
Aviator® Xpro™ offers a dual mode of action. This includes the inhibition of the Succinate Dehydrogenase enzyme by Bixafen and Prothioconazole's impact on the metabolism of the cellular membrane.

Fungal cell



# Aviator® Xpro™

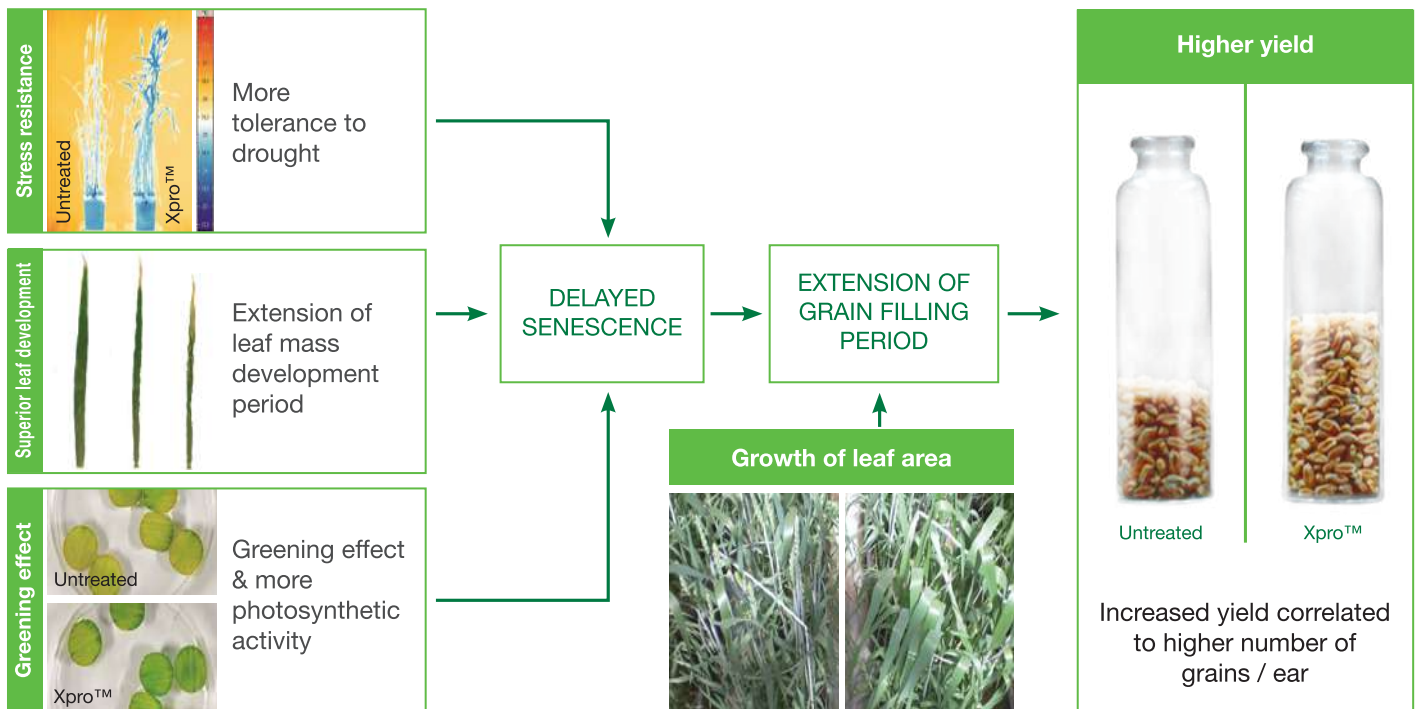
*Xpro™ targets various points during the pathogens development*



Unique distribution in the cereal leaf tissue in two ways means an extended duration of activity



### Physiological effects from Bixafen increase yield



Aviator® Xpro™ influences the physiology of the plant and contributes to boosting the yield

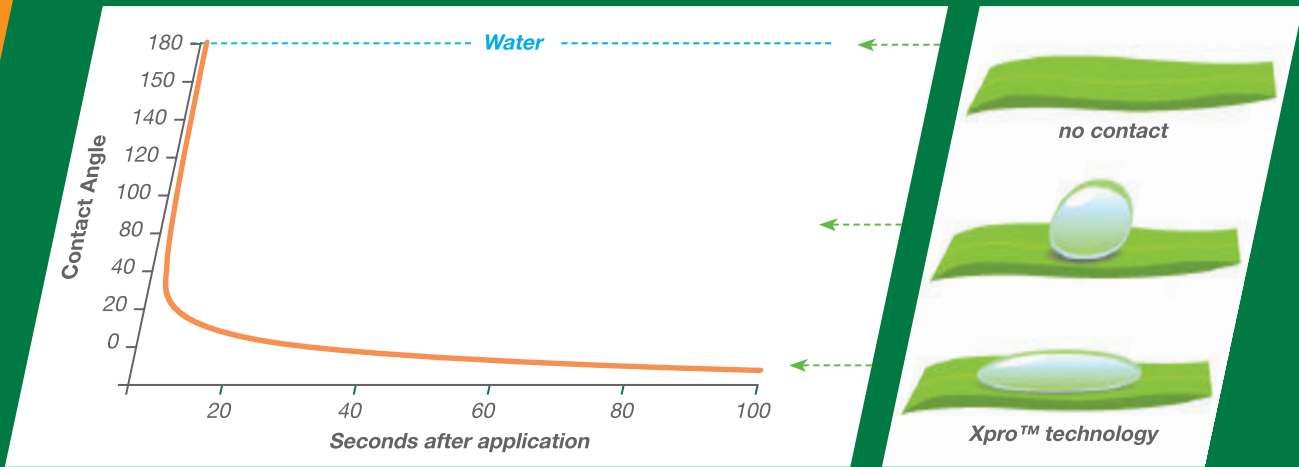
### Formulation Technology

Xpro™ formulation – two actives in a single container (EC formulation)



## High tech formulation

Unique adjuvants reduce the surface tension of the spray droplets. This increases the spread of the droplets and maximizes the contact area with the leaf. The reduced surface tension (flatter droplets) creates a thin film of protection which adheres to the leaf.



## Superior coverage

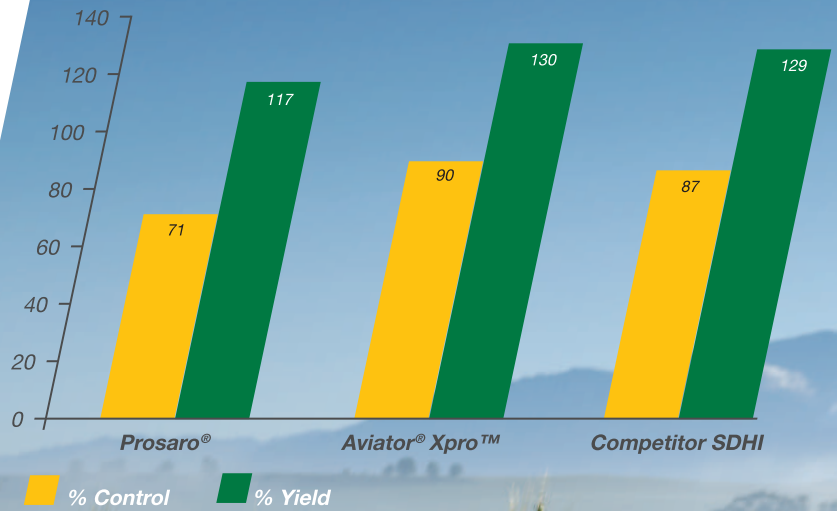
Unique combination of adjuvants for an optimal coverage on all cereals with all nozzle types and commonly used water volumes.

200 l /ha, nozzle type (AI 110-02)

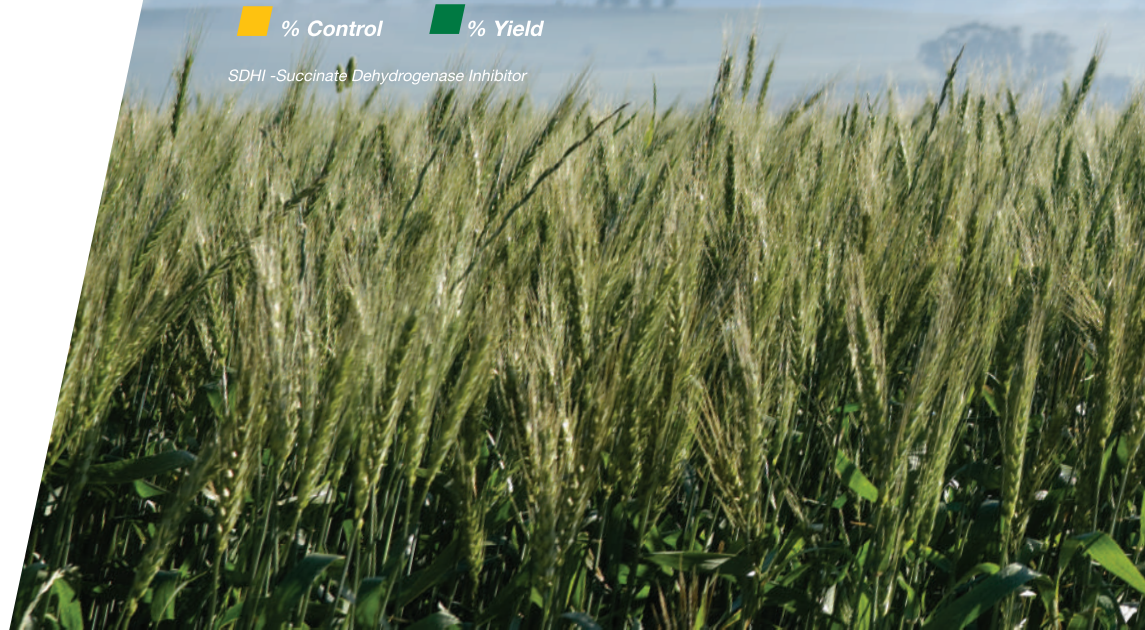


## Yield benefit due to excellent disease control and physiological plant growth benefit

Aviator® Xpro™ on Barley: Netblotch



SDHI - Succinate Dehydrogenase Inhibitor



## Product Positioning: Wheat



### Normal conditions

First spray at first node

Second spray at 20% ear emergence

### Powdery mildew year conditions

Second spray can be replaced with Prosper® Trio

### Eyespot conditions

First spray (at first node) - Prosar® at 600ml/ha

Second spray (at 20% ear emergence) -

Aviator® Xpro™

## Product Positioning: Barley



First spray at first node

Second spray at 20 % ear emergence

Aviator® Xpro™ Reg. No. L10089 (Act No. 36 of 1947). Aviator® Xpro™ contains Bixafen and Prothioconazole (Harmful). Prosar® Reg. No. L8510 (Act No. 36 of 1947). Prosar® contains Tebuconazole and Prothioconazole (Caution). Prosper® Trio Reg Nro. L9083 (Act No. 36 van 1947). Prosper® Trio contains Spiroxamine, Tebuconazole en Triadimenol (Skadelik). Aviator® Xpro™, Prosar® and Prosper® Trio are registered trademarks of Bayer AG, Germany. Use strictly according to instructions on label.





 | @Bayer4Crops

**Facebook:** Bayer Crop Science Division Southern Africa **Twitter:** @bayer4cropssa  
 Bayer (Pty) Ltd. Reg. No. 1968/011192/07  
 27 Wrench Road, Isando, 1601. PO Box 143, Isando, 1600, Tel: +27 11 921 5002

[www.cropscience.bayer.co.za](http://www.cropscience.bayer.co.za)  
[www.bayer.co.za](http://www.bayer.co.za)

